

WHATCOM HUMANE SOCIETY PAW PRINT

QUARTERLY NEWSLETTER - WINTER 2026

KINDNESS ♥ COMPASSION ♥ RESPECT



What a Long, Strange Trip It's Been A MESSAGE FROM THE WHS EXECUTIVE DIRECTOR

Dear Friends,

One of the founding members of the iconic rock band The Grateful Dead, Bob Weir, recently passed away. And so as I start to write this message, I'll begin with a quote from the group: "What a long, strange trip it's been."

On February 1, I celebrated my 25th anniversary working at



Whatcom Humane Society. Those 25 years have been long and strange... and amazing, inspiring, challenging, emotional, difficult, fun, crazy, chaotic, insane, wonderful, and full of surprises each and every day.

I honestly can't really wrap my brain around 25 years of service to this small but mighty organization that I love so much. When I arrived in the winter of 2001, the world was a very different place, as was animal welfare and sheltering. WHS was an underfunded and understaffed open-admission shelter providing animal control to Bellingham and a few of the smaller cities in Whatcom County. The shelter was located in an old, decaying building out by the airport.

At that time, over 5,000 domestic animals came through the doors—a staggering number considering the size of the building, the number of staff, and the extremely limited resources available to care for the animals. There were few programs available, and I remember meeting the handful of volunteers—seriously, less than 20—that were doing what they could to support the small staff. Those "old days" seem so far away, but I remember the people, the animals, and the animal control cases like it was yesterday. We fought the good fight then, when the shelter was not particularly well-thought of or liked in the community. **I Continued on pg. 4**



Whatcom Humane Society
CARING FOR ANIMALS SINCE 1902

THE SCOOP:

**2026 Woof & Whiskers
Awards Luncheon**

PAGE 02

**A Year In Review:
2025 Animal Care Stats**

PAGE 06

**The Big World
of Small Animals**

PAGE 07

**Would You Buy What You
Donate to the Thrift Shop?**

PAGE 08

**Humane Education:
Spring Critter Camp**

PAGE 10

Online Birdhouse Auction

PAGE 10

**Close Encounters of the
Furred Kind: A Cosmic
Celebration of Kindness**

PAGE 11



STATEMENT OF PRINCIPLE

WHS believes that all animals, as sentient beings, have value beyond economic measurements and are entitled to legal, moral, and ethical consideration and protection.

OUR MISSION

WHS advocates for animals; educates the community to promote humane treatment and respect for animals; and provides for abandoned, injured, abused, or neglected animals.

OUR VISION

A community in which all animals are treated with kindness, respect, and compassion.

SHELTER LOCATION

2172 Division Street
Bellingham, WA 98226
Phone: 360-733-2080
Fax: 360-733-4746

SHELTER SERVICES

360-733-2080 ext. 0
Tuesday-Sunday, 11:00-6:00
Adoption Counsels Stop at 5:00
Closed Mondays & Major Holidays

ANIMAL CONTROL DISPATCH

360-733-2080 ext. 3017
Tuesday-Sunday, 10:00-6:00
Monday: Please Call 911
for Emergency Dispatch

FARM FACILITY

By Appointment Only

WILDLIFE REHAB CENTER

Seven Days a Week, 9:00-5:00
Phone: 360-966-8845
*Not Open to the Public;
Please Call for Assistance.*

WHS THRIFT SHOP

1534B Birchwood Ave
Bellingham, WA 98225
Phone: 360-543-6792
Shopping Hours:
Tuesday-Saturday, 10:00-5:00
Donation Drop-off:
Tuesday-Saturday, 10:00-4:00



2026 **WOOF & WHISKERS AWARDS LUNCHEON**



celebrating our
Tea-rrific honorees:

Barkley Haggan Bakery

Whatcom County
Courthouse
Facility Dog, Davie

Spay/Neuter Northwest

Whatcom Feline Alliance



Friday, March 6, 2026 | 12:00 - 1:30 PM

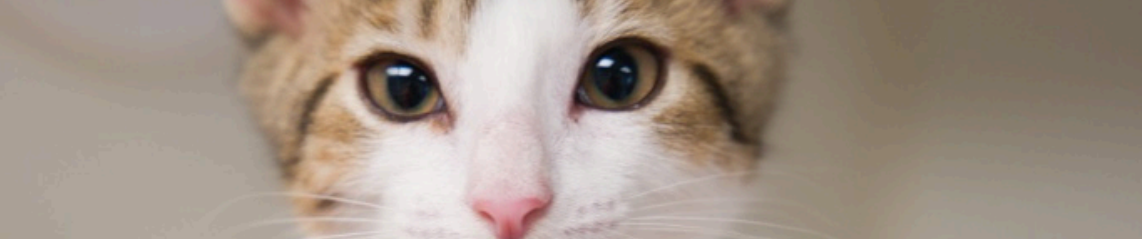
Bellingham Golf & Country Club | 3729 Meridian St

Lunch provided. RSVP required with suggested donation.

RSVP by Feb. 27 at whatcomhumane.org/woof-whiskers-2026

or by contacting Paige at development@whatcomhumane.org





BOARD OF DIRECTORS

Janet Hofmann, *President*
Kim Rice, *Vice President*
Scott Rice, *Secretary*
Victoria Savage, *Treasurer*
Michael Berres, Amy Campbell
Dan Claffey, Deborah Dial-Monroe
Maya Hartford, Jane Talbot
Kevin Williamson, Stephen Zylstra

EXECUTIVE DIRECTOR

Laura Clark

ADMINISTRATION

Andrea Merrill, Julia Pollock

ANIMAL CARE & SHELTER SERVICES

Mark Henry, *Shelter Services Supervisor*
Amy Wilkinson, *Animal Care Supervisor*
Gabby Whitehall, *Animal Care Supervisor*
Hayley Vanderveen, *Animal Care Supervisor*
Leila Parnell, *Animal Care Supervisor*
Sawyer Lanto, *Foster & Rescue Coordinator*
Emma Bocook, Addy Chamberlain
Darian Coffin, Ashley Craemer
Pebble Diehl, Payten Emerick
Kate Hawley, Ben Hayes,
Autumn Linde, Drew Mullins
Kailee Richter, Gwendolyn Stone
Shyanne Thomas, Katie Thorsell

WILDLIFE REHAB SERVICES

Anna Schwabe, *Supervisor and Licensed Wildlife Rehabilitator*
Renata Luders, *Volunteer & Intern Coordinator and Licensed Wildlife Rehabilitator*
Ashley Austin, Hanna Cillo
Kate Hawley, Mora Kozleski

ANIMAL CONTROL & RESCUE/FIELD SERVICES

Paul Evans, *Manager*
Kyle Berger, *Supervisor*
Claire Chandler, *Dispatcher*
Carrie Anderson, Brianna Kelly,
Victoria Meadowlark, Shelby Myhre,
Elizabeth Robinson

FINANCE/ACCOUNTING

Dana Berger

FUNDRAISING/DEVELOPMENT

Paige España, *Manager*

HUMANE EDUCATION

Alaina Rhodes

PROGRAMS & STRATEGIC PLANNING

Danielle Smith, *Manager*

VOLUNTEER SERVICES

Auna Carter, *Manager*

VETERINARY SERVICES

Karen Rounds, *DVM*
Sarah Hansen, *Vet Assistant*

THRIFT SHOP

Dana Browne, *Manager*
Jo Williams

Whatcom Humane Society presents:
Teddy Bear Tea Party

\$30 per child
Saturday, February 28th ~ 12pm - 3pm
Whatcom Humane Society - 2172 Division St, Bellingham
For kids ages 5-7

Come dressed in your bear-y best for an afternoon of tea and goodies at WHS

Kids bring your favorite teddy bear or stuffed animal and join us in our indoor enchanted forest for activities such as:

- Learn fun facts about bears and meet a member of the WHS Wildlife Rehabilitation team
- Special animal guests
- Animal-themed crafts and games
- Cozy teddy bear storytime
- and an unforgettable afternoon of fun!

Space is limited and registration required.
To register, visit whatcomhumane.org/whs-events/
For more info, contact Alaina at (360) 733-2080, ext # 3116
or email: outreach@whatcomhumane.org

WHS COMMUNITY PET FOOD BANK

Our pet food bank provides for homed animals in need and operates entirely by donation. We accept almost all kinds of pet food, even open bags. We can't take prescription diets, expired food, or food not in its original bag. Donations can be dropped off at our Division Street shelter Tues-Sun, 11am-6pm. You can also purchase items from our Chewy and Amazon wish lists at whatcomhumane.org/donate



Letter from ED, continued from pg. 1 | I still call many of those amazing people that I first met friends, colleagues, and heroes today.

Over the course of that first decade, we worked round-the-clock, seven days a week to develop programs, offer services, and recruit volunteers and staff to improve life for domestic animals in our community. I think I attended every community parade, service group meeting, elementary school classroom, festival, and street fair in the entire county to talk about WHS's mission and work—as well as countless city and county council meetings to speak with elected officials about the need for support. During that time, WHS entered into additional animal control contracts, including serving unincorporated Whatcom County, and took over operations of a second shelter facility to help care for animals and support shelter services.

In 2009 I was given the opportunity to serve as executive director of WHS—a job I fought hard for and have not forgotten for one second the honor and immense responsibility the position holds.

Remember Lisa the pig, a 750 lb. sassy sow who needed somewhere to go? She lived in my backyard since WHS didn't have a proper or safe facility for her. Oh, those were the days! Thankfully, a 10-acre property was later provided by a generous donor, and with the help of our amazing volunteers, the property was transformed into a wonderful, peaceful refuge complete with a barn, paddocks, enclosures, and pasture land for horses and farm animals to find care and comfort.

In 2013, after a few years of intense fundraising, we were finally able to move into our badly needed, beautiful new shelter facility in Bellingham. With nine acres of land behind the shelter for dog walking, it was a joyous occasion for both the people and animals in our community. Adoptions increased, we were able to provide humane education and community outreach programs in and out of the shelter for all ages, and we finally had resources available to offer expanded low-cost and free spay/neuter services to community animals in need.

Enter wildlife rehabilitation—because why not?! Assuming operations of a wildlife rehabilitation center in 2014 was a big learning curve for WHS. Purchasing a 40-acre property in which to provide quality services for injured and orphaned wildlife in 2021 was and continues to be a daily challenge—but a challenge that is so incredibly rewarding and a true labor of love.

Someone recently asked me what keeps me working in animal welfare while most of the colleagues I came up with in the shelter ranks have moved on to jobs either outside of animal welfare or have left day-to-day shelter work for national animal welfare groups. Honestly, it's work that I love **I Continued on pg. 5**



Laura and baby Zane (and chicken!), ready to take the helm of Whatcom Humane Society in 2009.



Laura and Lisa bonding in Laura's backyard in 2010.



Construction of our domestic animal shelter on Division Street in 2012-2013 was a true labor of community love.



Letter from ED, continued from pg. 4 | and that I'm passionate about, and I have a deep desire to continue to improve the lives of animals in our community—the community that I moved to 25 years ago and I have the privilege of calling home.

I strongly believe that it's because of the people that support WHS that my commitment remains so steadfast. The staff that I have had the honor to work with over the years are the hardest working people I've ever met. Heroes, each and every one of them! Some of the current WHS staff members were not even born when I started my career in animal welfare back in the 1990s in northern California or when I moved to Whatcom County. But many of those young professionals are as good as it gets—smart, strong, compassionate future leaders in our industry and community. I love working with them, and they collectively make me a better, more compassionate leader. And those 20 or so original volunteers that I met back in 2001: A few of the originals are still volunteering, still making a huge difference, still inspiring others, including myself, each and every day. They have been joined by a current WHS volunteer team that is 400+ strong and the most amazing people and community members.

I sincerely thank everyone associated with Whatcom Humane Society over the past 25 years for the support you have provided to our open-admission shelters and to the thousands of animals big and small that have entered our doors needing care, services, a second chance, protection, advocacy, kindness, respect, and compassion. It's what we do, it's who we are, it's who I am—and I can't think of anywhere else I would rather be.

Do I have another 25 years in me? HA! I'm not sure, but I'm in if you are...In the meantime, we have another busy year ahead, with a lot going on at our shelters and community. I hope you will find time to attend an upcoming event, open your heart and home to a new companion animal, join our volunteer team, shop at our thrift shop, donate to our thrift shop, become a monthly supporter, or just stop by to say hello.

On behalf of the domestic, farm, and wild animals in our region, thank you for continuing to provide us with the resources to remain ready to respond to animals in need. Your support means so much to us.

With gratitude and appreciation,

Laura Clark, Executive Director

P.S. You might notice the new dog in my cover photo. I look forward to introducing you to this goofball and the latest addition to the Clark household in the next newsletter—he is quite a character!



LICENSED TO

explore.

And your pet license can do so much more! Get your Whatcom Humane Society pet license today at whatcomhumane.docupet.com




WHS has partnered with DocuPet to provide an enhanced pet licensing experience for residents. When you register your pet with WHS, you will receive a unique license tag to attach to their collar. [Learn more at: whatcomhumane.org/services](http://whatcomhumane.org/services)





2025 WHS ANIMAL CARE STATISTICS

This includes 1,866 strays, 1,381 owner-surrenders, 118 protective custody cases, and 46 transfers.

3,411 DOMESTIC AND FARM ANIMAL INTAKES



1,930 ADOPTIONS

Plus 542 redemptions and 304 transfers



Our Animal Control & Rescue and Wildlife Rehabilitation Center are available 365 days of the year.

2,191 WILD ANIMALS IN CARE



151 DIFFERENT SPECIES



This includes 97 bird species, 3 different amphibians, 39 mammal species, and 6 reptile species.

For more details, visit whatcomhumane.org/about



Whatcom Humane Society
CARING FOR ANIMALS SINCE 1902

PET LOSS SUPPORT GROUP

Provided by Whatcom Humane

Our monthly in-person support group provides a safe place for connecting grieving pet owners with experienced facilitators and other resources. Whether you are currently suffering loss or are anticipating loss, we encourage you to join us. Volunteer counselors offer support and resources for those who have been touched by:

- The loss of a pet
- Anticipating the death of a pet
- Dealing with the difficult decision of euthanasia
- Having suffered from a lost or stolen pet
- Wondering if they are ready for another pet

WHEN & WHERE:

First Wednesday of every month, 6:00 pm (typically 1-hour sessions)

Whatcom Humane Society
Multipurpose Room
2172 Division Street, Bellingham

FREE to attend
Registration not required

For more info, please email outreach@whatcomhumane.org or call 360-733-2080 ext. 3116

Additional resources available at whatcomhumane.org/resources

The Big World of Small Animals



Q&A WITH WHS SMALL ANIMALS VOLUNTEER, JENNIFER PLOMBON

A WHS volunteer for 12 years and counting, Jennifer specializes in Guinea pig TLC. “I prefer small animals because they’re unique,” she said. “Everyone knows cats and dogs, but I get to meet birds, bunnies, piggies, chinchillas, ferrets, and others.”

Q: Can you share how you first learned about Guinea pig care?

JP: I have been involved in pet hedgehog rescue for 25 years—I am one of the founders of Hedgehog Welfare Society—so I was familiar with caring for small pets. As I began working with the bunnies and Guinea pigs in the Small Animal Room at Whatcom Humane Society, I became very fond of them and their differences and similarities to the hedgehogs I knew so well. I never planned to branch out into adopting Guinea pigs since I had several rescued hedgehogs...then one day, Luna the Guinea pig showed up. Luna was seized from a bad breeder/hoarder situation. Used as a breeder, her long flowing white hair was stained and matted, and she was terrified of people and all other Guinea pigs. She was taken home by the Foster Care/Volunteer Coordinator at the time, to give her a chance to recover and calm down and become more adoptable. When she was brought to WHS and placed in the Small Animal Room, I saw her all alone and looking so scared, and I asked for her story. Her foster had been reluctant to bring Luna in for adoption because she needed “a very special adopter”—one who would be fine with a piggie who did not want cuddles from people and who would not try to make her share a cage with another piggie. Since hedgehogs mostly don’t cuddle nor share their cages, I seemed like the perfect adopter and took her home. Luna was with me for 5 years minus 1 day and eventually allowed me to hold her on my lap (although she never did learn to like any other piggies!). She taught me so much about Guinea pig care. I’ve adopted and fostered many other piggies thanks to Luna.

What are some basics of Guinea pig care that people new to living with them should know about?

JP: While they’re less work than a dog or cat because they don’t need to be walked and don’t try to escape outdoors, Guinea pigs do make a mess in their cage and it needs to be cleaned every day so that they aren’t resting or sleeping in wet or soiled bedding. They also require medical care at times and must be seen by a specialized exotic animals vet with Guinea pig experience. They must have fresh clean hay at all times (preferably Orchard Grass hay, which few people are allergic to) and hard wooden toys or houses to chew on, to keep their teeth trimmed since they grow constantly throughout their lives. It’s also good to know that their urine may be slightly cloudy even if they’re healthy due to minerals in it and may be red if you give them a strawberry or other red treat.

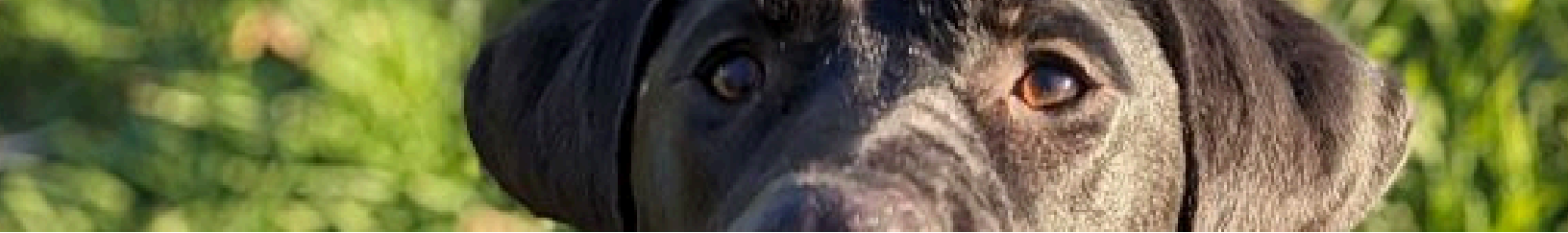
What are some misconceptions about Guinea pigs and other small animals that you’ve encountered?

JP: That they don’t love their humans or pay attention to them. That is so untrue. They spend much of their time observing us and what we do, and figuring out how to respond. Anyone who’s had a Guinea pig knows how quickly they learn to “wheeeeeek” at the sound of a plastic produce bag being opened. They will learn the sound of their kibble bowls being clinked together, they will learn to recognize your specific footsteps entering their room, and they will stand on their hind legs to greet you. Not all of them want to be held and cuddled, but they all pay close attention to us. And while it is true that they should not live alone, throwing any two piggies or bunnies together in a cage is a very dangerous thing to do: They need to be introduced safely and gradually (if you adopt from WHS, we can teach you how)—and there are some, like Luna, for whom simply having other piggies in the room to talk to is the best solution.

Why would you encourage folks to consider Guinea pigs and other small animals when adopting?

JP: For the reasons listed above, and because when you’re freed from the need to take them out for walks or protect furniture from scratches and vacuum up a lot of fur, you can relax and watch them in their warm comfy homes, just being their silly selves. I love to sit in my pet room and weave or watch TV and just watch my piggies running laps in their cage, or leaping into the hay bin and burying themselves, or suddenly lying down and taking a quick nap before popcorning around the cage. And if you spend the time to make them comfortable with snuggling, a Guinea pig in your lap is a special treat.

Ready to meet a little piggie or small animal of your own? Learn more at whatcomhumane.org/adopt



Would You Buy What You're Donating?

WRITTEN BY JO WILLIAMS, WHS THRIFT SHOP ASSISTANT

"One man's trash is another man's treasure." This well-known proverb is entirely true—to an extent. When an item no longer sparks joy, fits, or fills a purpose, or is outdated or becomes unnecessary clutter, donating it to our WHS Thrift Shop can feel better than throwing it away. You're saving it from entering the landfill and giving it a second (or sometimes third or fourth) chance at life. And you're supporting a good cause, which is to raise money for the animals at our open-admission domestic, farm, wildlife shelters. While well-intentioned, one very important question to ask yourself is: Would you buy what you are donating?

Assessing a small percentage of the donations that come through our intake doors, this question becomes important to highlight and remember. We are a nonprofit with a limited budget and storage space, and sometimes very limited volunteer help. Every single item donated must be sorted, inspected, cleaned if it passes said inspection, priced, and then put on the floor for sale. When donated items are damaged, chipped, broken, soiled, ripped, or filthy, they don't miraculously become sellable. Instead, they become an item for us to figure out what to do with, including having our mostly volunteer-run staff handle some very questionable and unhygienic things. While we have recycling resources for metal and torn or dirty fabrics, including clothing and linens, these resources cost money—funding that then doesn't go towards our intended mission, the animals.

At the WHS Thrift Shop, we take pride in only selling quality items. Many people shop at thrift stores out of necessity, not for entertainment or income as a reseller. When we share items in poor condition, it sends a message about what we believe others should accept. When a damaged or dirty item no longer meets your standards of cleanliness or useability, it likely doesn't belong in a donation pile meant for our shelves. Donating responsibly and respectfully helps for multiple reasons: It raises money for our cause because items that are clean, working, and in a condition that you'd pay for yourself will sell; thoughtful donations help us succeed and help our customers secure everyday necessities and discover treasures they didn't know they needed; and it keeps items out of the landfill, taking care of Mother Earth by reducing waste.

Asking the question "would you buy what you donate?" is not meant to shame anyone but rather to encourage awareness. We are extremely grateful for the support and dedication from our donors and customers alike. We are only asking people to take an extra moment when putting an item in your donation bag: If you wouldn't buy it due to the condition it's in, please consider that it might be the time for it to be discarded rather than donated (a choice that may save us time and resources from needing to do the very same thing). In this way, donating thoughtfully becomes an act of respect—for our volunteers and staff, for our loyal customers, and for the knowledge that shopping secondhand doesn't mean second best.

DONATED ITEMS THE SHOP CAN ACCEPT:

- Accessories
- New/Gently Used Adult Clothing & Shoes
- Antiques & Collectibles
- Artwork
- Books
- Clean/Washed Curtains
- DVDs and CDs
- Jewelry
- Kitchen Items
- Knick-Knacks
- In-Season Holiday Decor
- Household Decor
- Clean/Washed Linens and Throw Rugs
- Pet Supplies
- Vintage Collectibles

ITEMS THE SHOP CANNOT TAKE:

- Large Appliances
- Bed Pillows, Down Pillows, Comforters
- Building & Remodeling Materials
- Carpet (Rugs OK)
- Car Seats or Baby Strollers
- Cashmere
- Children's Clothing, Shoes, Accessories
- Cleaning Supplies
- Computer Items
- Cosmetics and Toiletries
- Cribs, Walkers, or High Chairs
- DVD Players, VHS Tapes, Cassettes
- Electric Blankets or Heating Pads
- Encyclopedias
- Feathers
- Fishing Poles
- Fur products of any kind
- Furniture
- Gas-Powered Yard Equipment
- Golf Clubs & Bags
- Helmets (any kind)
- Leather products of any kind
- Magazines
- Mattresses or Waterbeds
- Medical Supplies
- Paint/Hazardous Items
- Records
- Silk
- Skis or Snowboards
- Stuffed Animals
- TVs, VCRs, or Old Stereos
- Undergarments
- Wool



Whatcom Humane Society
CARING FOR ANIMALS SINCE 1902

WHS THRIFT SHOP

*Great Finds For
A Great Cause!*

PARK MANOR SHOPPING CENTER
1534B Birchwood Ave
Bellingham, WA 98225



STORE HOURS:

Tuesday-Saturday,
10:00am-5:00pm

DONATIONS ACCEPTED:

Tuesday-Saturday,
10:00am-4:00pm

QUESTIONS? CALL 360-543-6792

Please visit whatcomhumane.org
for info on what items we can and
cannot accept as donations.

*Donate, Shop, Volunteer
For the Animals!*



Whatcom Humane Society
CARING FOR ANIMALS SINCE 1902

WHATCOM HUMANE SOCIETY'S WORKING CATS PROGRAM

The Whatcom Humane Society's Working Cats Program places healthy semi-feral and non-socialized adult cats with adopters looking for cats not suited for indoor-only living environments. Working cats will receive:

- Spay/neuter
- Initial FVRCP Vaccination
- Flea Treatment (30 Day)
- 1-Year Rabies Vaccination
- FIV/FelV Testing
- Microchip
- Ear Tip
- Dewormer



WHS will also provide the adopters with instructions on how to transition working cats into their new environment.

BENEFITS

- Provides natural pest population control.
- Ideal for barns, stables, warehouses, ranches, wineries, churches, etc.
- Provides previously homeless animals with a safe place to live and reduces the number of cats euthanized.

REQUIREMENTS

- Approved WHS adoption application.
- Cats must be adopted in pairs if there are no resident cats on the property
- Adopters must provide food, water, & shelter year-round and vet care.
- Adopters will need to allow 2-4 weeks for cats to acclimate to their new space.



Contact Working Cats Coordinator: 360-733-2080 x 0
or workingcats@whatcomhumane.org
Adoption Fee: \$20 per cat

BECOME A MONTHLY DONOR OR ANNUAL MEMBER TODAY!

When you establish an ongoing contribution to WHS, you are joining us in a pledge to be there for domestic, farm, and wild animals across our region and beyond—*no matter the time, no matter the reason*. Your gift allows us to nimbly respond to the needs of our community, strengthening our core shelter services so we can deliver life-changing care, bring families together, and build a kinder world for animals. whatcomhumane.org/donate





Whatcom Humane Society
CARING FOR ANIMALS SINCE 1902

Spring Critter Camp

April 8-10 from 10 AM to 2 PM

Whatcom Humane Society
2172 Division Street
Bellingham, WA 98226

Kids ages 5 through 7 are invited to attend our spring critter camp! This 3-day camp will include opportunities for kids to learn about domestic, farm, and wild animals in our shelters and community.

During this workshop we will...

- ✓ Interact with a variety of animals
- ✓ Gain knowledge and skills about animals and animal welfare
- ✓ Enjoy animal-themed crafts, service learning activities, games, and more!

Register online at:
whatcomhumane.org/events

Drop-off event. Space is limited and registration is required. Spots reserved upon payment. Limited financial scholarships available. For questions, contact 360-733-2080 x 3116 or outreach@whatcomhumane.org



Whatcom Humane Society
Wildlife Rehabilitation Services



ONLINE BIRDHOUSE AUCTION

OPENS: MONDAY, MARCH 23, AT 8:00 AM

CLOSES: MONDAY, MARCH 30, AT 8:00 PM

What's the twitter all about? Our online birdhouse auction is back! Be sure to join in on this year's biddings: We'll be showcasing a fantastic selection of handcrafted works of art from generous community members, all lovingly made to fundraise for the WHS Wildlife Rehabilitation Center! In addition to birdhouses, the auction includes other bird and wildlife-related items such as yard art and supplies, wall art & more.

LEARN MORE AND REGISTER TO BID:
whsbirdhouseauction2026.maxgiving.bid



PLUS, THERE'S STILL TIME TO JOIN AS A BIRDHOUSE BUILDER/ARTIST!

Help by decorating a birdhouse, or building a birdhouse for others to decorate, or purchasing a birdhouse to be included in the auction. We are also accepting yard art & related items (please contact Paige to discuss possible donations). Birdhouses can be any size & your choice of medium, we just ask that you don't use animal products like real feathers, leather, wool, etc. (if you aren't sure about a material, reach out to Paige to chat!).

BIRDHOUSE DELIVERY DEADLINE: MARCH 1, 2026
Deliver to 2172 Division St. anytime between now and March 1.

Ready to help? Please contact Paige at development@whatcomhumane.org or 360-733-2080 x 3014



Call for Auction Items

HELP US MAKE THIS YEAR'S GALA FUNDRAISER OUT OF THIS WORLD!

We are currently gathering donations for our Gala auction & looking for the following types of items:

- Gift cards for stores, restaurants, and more
- Game day tickets
- Destination and experience packages (e.g., guest house donations, cooking classes, etc.)
- Tickets for events happening after May 2026
- Staycation packages (e.g., at-home spa day, dinner date night, movie night, etc.)
- Themed gift baskets

Please note that with our animal-friendly product policy, we are unable to use items made with fur, leather, wool, silk, or real feathers.

If you can help with a donated item, please reach out to Paige at 360-733-2080 x 3014 or development@whatcomhumane.org. We greatly appreciate your help—thank you!

MOUNT BAKER THEATRE
MOVIE PALACE EXCLUSIVE

BEST IN SHOW
WITH PRESHOW
PET PARTNERS

Brigadoon SERVICE DOGS
Whatcom Humane Society
Tails
PETSTOP
TIFFANY BROOKS PHOTOGRAPHY

SUN, APRIL 19, 2026 | 2:00 PM

Whatcom Humane Society
24th Annual
WHS Gala
& Auction

CLOSE ENCOUNTERS OF THE FURRED KIND
A Cosmic Celebration of Kindness

A HUGO & ROLO PURRDUCTION

SAVE THE DATE:
SATURDAY, MAY 16 | 5:00-9:00 PM
FOUR POINTS BY SHERATON | 714 LAKEWAY DRIVE
& ONLINE AUCTION: MAY 11 - MAY 16

Create a Legacy of Compassion

Plan for the people, pets, and causes you care about with WHS & FreeWill:

freewill.com/whatcomhumane

Whatcom Humane Society



Whatcom Humane Society
CARING FOR ANIMALS SINCE 1902

2172 DIVISION STREET
BELLINGHAM, WA 98226

*Kindness
Compassion
Respect
For All Animals*

LOOK INSIDE FOR YOUR LATEST EDITION OF THE WHS PAWPRINT NEWSLETTER!

GET READY FOR THE CUTEST PAJAMA PARTY YOU'VE EVER SEEN...

SHELTER™
SLUMBER PAWTY

24-HOUR EVENT: APRIL 18

Stay tuned: ShelterSlumberPawty.com

STAY CONNECTED WITH WHS

LEARN MORE ABOUT US:
whatcomhumane.org

GET THE LATEST UPDATES:
[@whatcomhumanesociety](https://www.instagram.com/whatcomhumanesociety)

SIGN UP FOR WHS E-NEWS:
Visit our website or email administration@whatcomhumane.org

LEND US A HAND: Leave a pawsitive review on Google, Facebook & Yelp